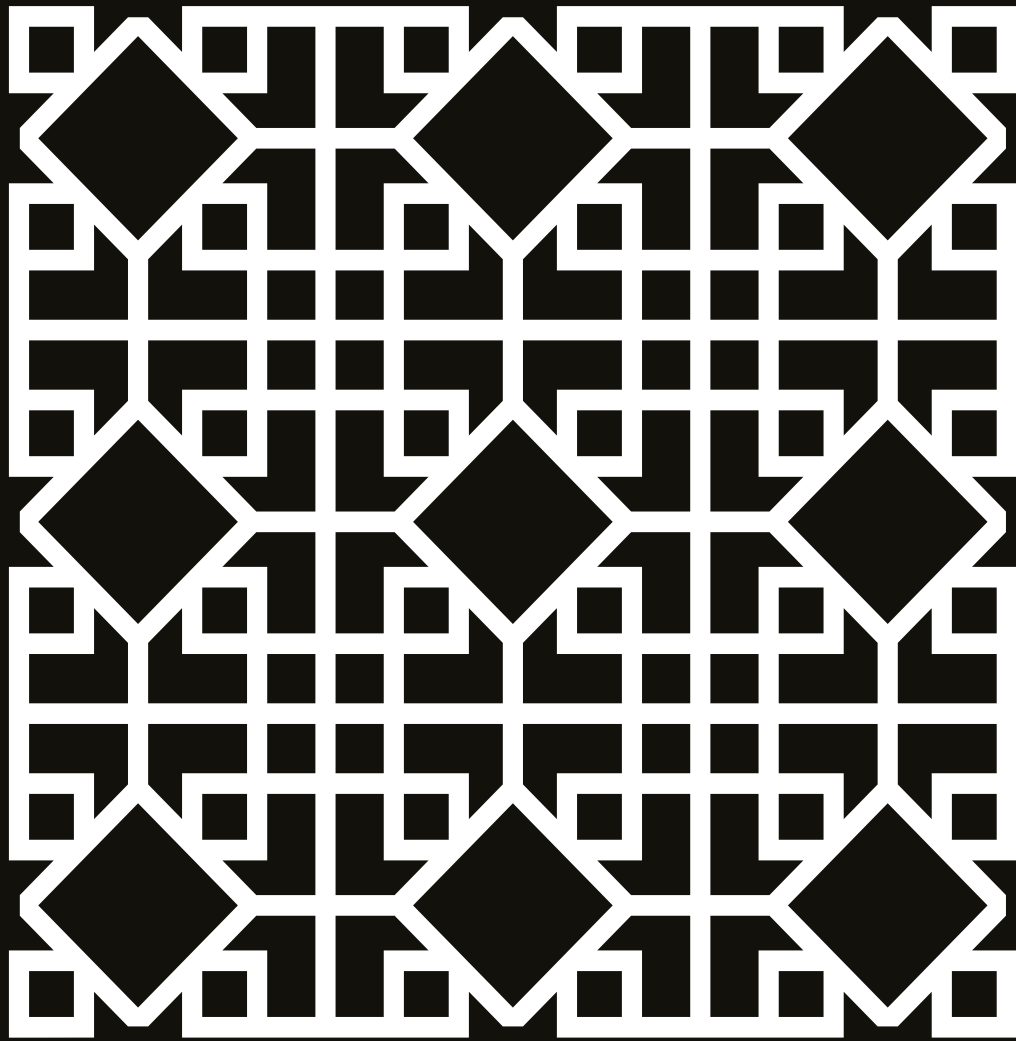




ENGLISH
MENU



MONSOON

RECOMMENDED DRINK

Pink Gin

NOK 169

Gordon's pink, orange,
Fever-Tree Pink Tonic

CONTAINS: SULPHITES

Mionetto Treviso Prosecco Brut

glass NOK 135

Juicy and light with good freshness, hints of pear
and citrus, a little green apple and meadow sorrel

CONTAINS: SULPHITES

San Pellegrino Limonata

bottle NOK 62

Carbonated drink with sun-ripened
lemons from Italy



MONSOON RECOMMENDS



Springroll

CONTAINS: SESAME, SULPHITE, SOY, WHEAT

Filled with pork and served with sweet chili dip

2 psc 130 / 3 pcs + rice 190



Salmon Flambé Roll

CONTAINS: SOY, FISH, SHELLFISH, WHEAT, EGG, SESAME

Salmon, chilimayo, teriyaki sauce, spring onion,
tempura shrimp, avocado

8 psc 190



Crazy Duck

CONTAINS: SESAME, SULPHITE, SOY, WHEAT

With asian pancake, cucumber, spring onion
and our home made hoisinsaus

375



Red Curry

CONTAINS: SULPHITE, FISH

Chicken, peppers, carrots, mushrooms, coriander,
onions, squash, fresh chili, coconut milk and rice

235

The Chef Recommends

SOCIAL SHARING MENU

CONTAINS: SHELLFISH, WHEAT, SESAME, SOY, MOLLUSKS, SULPHITE

Tempura Maki (fried scampi and avocado), prawn crackers, Gyoza with chicken, Spring rolls, Crazy Duck and Asian pancakes

NOK 399 pr. person

MONSOON

SUSHI & ASIAN

COCKTAILS








Monsoon Mule 159 <i>Vodka, sake, coriander, lime, Fever Tree Ginger Beer</i> <small>CONTAINS: SULPHITE</small>	Yuzu Fizz 159 <i>Bacardi Limón, yuzu, lemon and soda</i> <small>CONTAINS: SULPHITE, EGG</small>
Cherry Blossom 159 <i>Amaretto, cherry, lime, sugar, angustura, egg white</i> <small>CONTAINS: SULPHITE, EGG</small>	Blossom G&T 179 <i>Ukiyo Blossom Gin, orange, Fever Tree Tonic</i> <small>CONTAINS: SULPHITE</small>
Rum Passion 159 <i>Bacardi rum, peach, lime, sugar, passion fruit</i> <small>CONTAINS: SULPHITE</small>	Pink Gin 169 <i>Gordons pink, orange, Fever-Tree Pink Tonic</i> <small>CONTAINS: SULPHITE</small>
Amaretto Sour 159 <i>Amaretto, sugar, lemon, angustura, egg white</i> <small>CONTAINS: SULPHITE, EGG</small>	Espresso Martini 159 <i>Vodka, espresso, Kahlua, sugar</i> <small>CONTAINS: MILK</small>

SNACKS

Edamame Beans 75 / Spicy 82 <small>CONTAINS: SOY</small>	Kimchi 69
Wasabi Nuts 55 <small>CONTAINS: WHEAT, PEANUTS</small>	Prawn Crackers 55 <small>CONTAINS: SHELLFISH, WHEAT</small>

SHARING & STARTERS

ADD A BOWL OF RICE
FOR NOK 45

Gyoza (4 stk) <small>CONTAINS: WHEAT, SOY</small> <i>With chicken and coriander</i> 129	Sticky Wings (7 stk)  <small>CONTAINS: SESAME, SULPHITES, SOY, WHEAT</small> <i>Chicken wings glazed in Korean BBQ-sauce</i> 159
Szechuan Spicy Gyoza (4 pcs)  <small>CONTAINS: WHEAT, SOY</small> <i>With chicken and spring onion</i> 129	BBQ Pork Bao (2 pcs)  <small>CONTAINS: WHEAT, SOY, SULPHITE, FISH, EGG</small> <i>Fried bun with pork neck, kimchi, BBQ-sauce, coriander, chili mayo, cucumber and fresh chili</i> 198
Tempura Shrimp (7 pcs)  <small>CONTAINS: SHELLFISH, EGG, WHEAT, SESAME</small> <i>Served with chili mayo, cucumber, tobiko, coriander and sesame</i> 169	Chicken Bao (2 pcs)  <small>CONTAINS: PEANUTS, SOY, WHEAT, SULPHITE, EGG</small> <i>Steamed bun with chicken, peanut sauce, cucumber, pickled carrot, spring onion and chilimajo</i> 209
Spring Roll  <small>CONTAINS: SESAME, SULPHITE, SOY, WHEAT</small> <i>Filled with pork and served with sweet chili dip</i> 130 / 190 2 pcs / 3 pcs + rice	
Chicken Skewers  <small>CONTAINS: PEANUTS, SULPHITE, SOY, WHEAT</small> <i>With peanut sauce, coriander and sesame</i> 130 / 190 3 pcs / 5 pcs + rice	

SOCIAL SHARING MENU

The Chef's Sharing Menu (Min. 2 pers)

CONTAINS: SHELLFISH, WHEAT, SESAME, SOY, MOLLUSKS, SULPHITE

Tempura Maki (fried scampi and avocado), prawn crackers, Gyoza with chicken, Spring rolls, Crazy Duck and Asian pancakes

NOK 399 pr. person

ALLERGY WARNING: ALL OUR DISHES ARE PREPARED IN THE SAME KITCHEN AND MAY CONTAIN TRACES OF OTHER ALLERGENS THAN STATED

SUSHI COMBOS

Just Salmon Nigiri

CONTAINS: FISH

12 pcs salmon nigiri 295

Combo 1 - 12 pcs

CONTAINS: SESAME, SULPHITE, SOY, EGG, FISH

6 maki with salmon, avocado and chili mayo & 6 nigiri with salmon 225

Combo 2 - 14 pcs

CONTAINS: SESAME, SULPHITE, SOY, EGG, FISH, MOLLUSCS

8 maki with salmon, avocado and chili mayo & 6 Nigiri; 2 salmon, 1 scampi, 1 scallop, 2 tuna 260

Combo 3 - 18 pcs

CONTAINS: SESAME, SULPHITE, SOY, EGG, FISH, MOLLUSCS, WHEAT

12 pcs Ebi Tempura Roll; Deep fried scampi, asparagus, avocado, teriyaki, chilimayo, alfalfa sprouts 6 nigiri: 4 salmon, 1 scampi, 1 tuna 330

Deluxe Combo - 26 pcs

CONTAINS: SESAME, SULPHITE, SOY, EGG, FISH, MOLLUSCS, SHELLFISH

8 pcs Salmon Flambé roll with chili mayo, teriyaki, shrimp and avocado. 12 nigiri; 4 salmon, 2 scampi, 2 tuna, 2 scallops, 2 eel flambé and 6 pcs sashimi 440

Pokebowl

CONTAINS: FISH, EGG, SOY, SESAME

Salmon, mango, edamame beans, spring onions, pickled carrots, avocado and rice topped with chilimajo, spicy soy sauce and sesame seeds 219

SUSHI ROLLS

ADD CHILIMAYO OR TERIYAKI SAUCE
FOR NOK 25

Spicy Tuna Roll (8 pcs)

CONTAINS: EGG, FISH, SESAME

Tuna, chilimayo, avocado, tobiko, chili sauce, black and yellow sesame 160

Salmon Flambé Roll (8 pcs)

CONTAINS: SOY, FISH, SHELLFISH, WHEAT, EGG, SESAME

Salmon, chilimayo, teriyaki sauce, spring onion, tempura shrimp, avocado 190

Fried Salmon Roll (8 pcs)

CONTAINS: SESAME, FISH, SOY, SULPHITE, EGG, WHEAT

Fried roll with salmon, avocado, teriyaki sauce and chilimayo 190

Sashimi (7 pcs)

CONTAINS: FISH, SOY, SULPHITE, WHEAT

5 salmon, 2 tuna with rice and ponzu sauce 190

Veggie Tempura Roll (12 pcs)

CONTAINS: WHEAT, SESAME, SOY

Avocado, cucumber, coriander, chili sauce, alfalfa sprouts, Teriyaki and chili 175

Spicy Vegan Roll (8 pcs) 🌱

CONTAINS: SULPHITE, SESAME

Carrot, cucumber, spring onions and chilisauce. Topped with mango and ginger sauce 150

Tempura Maki (8 pcs)

CONTAINS: WHEAT, SHELLFISH, SESAME

Deep fried scampi and avocado 155

Salmon Uramaki (8 pcs)

CONTAINS: FISH, SESAME

Salmon and avocado 150

Beef Tataki Roll (8 pcs)

CONTAINS: SULPHITE, SOY, WHEAT, SESAME, EGG

Marinated and grilled steak, crispy garlic chips, avocado, cucumber, teriyaki sauce and chilimayo 185

Ebi Tempura Roll (12 pcs)

CONTAINS: WHEAT, SHELLFISH, EGG, SOY, SESAME

Deep fried scampi, asparagus, avocado, teriyaki, chilimayo, alfalfa sprouts 195

Crazy Duck Roll (10 pcs)

CONTAINS: SESAME, SULPHITE, SOY, WHEAT

Deep-fried duck and cucumber. Topped with spring onions, garlic chips teriyaki sauce and hoisin sauce 195

NIGIRI

ADD CHILIMAYO OR TERIYAKI SAUCE
FOR NOK 25

Salmon 2 pcs 60

CONTAINS: FISH

Scampi 2 pcs 65

CONTAINS: SHELLFISH

Eel Flambé 2 pcs 65

CONTAINS: FISH, SOY

Scallops 2 pcs 65

CONTAINS: FISH, MOLLUSCS

Avocado 2 pcs 55

Tuna 2 pcs 65

CONTAINS: FISH

SAKE

CONTAINS SULPHITE

Heiwa Shuzō Yuzu

Fruit sake with yuzu. Excellent for dessert or after a meal

4 cl 95,- Carafe 15 cl 320,-

Mii no Umeshu

Fruit sake with plum, sweet sake perfect for dessert or spicy dishes

4 cl 92,- Carafe 15 cl 310,-

Chikuma Nishiki Shuzō Kizan

Fresh with some sweetness, perfect for sushi or as aperitif

Glass 99,- Carafe 320,-

THAI

Red Curry 🍲🍲

CONTAINS: SULPHITE, FISH

Chicken, peppers, carrots, mushrooms, coriander, onions, squash, fresh chili, coconut milk and rice 235

Vegan Red Curry 🍲🍲

CONTAINS: WHEAT, SULPHITE (Tofu is deep-fried in the same fryer as shellfish)

Tofu, peppers, carrot, champignon, cilantro, onion, squash, chili and rice 235

Pad Thai 🍲

CONTAINS: EGG, PEANUTS, SHELLFISH, SOY, FISH

Scampi, chicken, bean sprouts, cilantro, rice noodles, egg, onion, fresh chili, peanuts and spring onions 235

Veggie Pad Thai 🍲

CONTAINS: WHEAT, EGG, PEANUTS, SOY (Tofu is deep-fried in the same fryer as shellfish)

Tofu, bean sprouts, rice noodles, egg, onion, peanuts, fresh chili and spring onions 235

Bang Bang Chicken and Shrimp 🍲🍲🍲

CONTAINS: FISH, SHELLFISH

Chicken, scampi, squash, carrots, mushrooms, green beans and scallions in a tasty coconut curry. Served with rice 245

Fried Rice

CONTAINS: WHEAT, EGG, SOY

Fried rice with chicken, eggs, carrot, green beans, onions, spring onions and fried onions 209

Green Curry 🍲🍲

CONTAINS: SULFITE, FISH, SHELLFISH

Chicken, green beans, onion, mushroom, coriander, squash, coconut milk, sweet pea and green peppers. Served with rice 235

MAIN COURSES

Crazy Duck

CONTAINS: SESAME, SULPHITE, SOY, WHEAT

With asian pancake, cucumber, spring onion and our home made hoisinsaus 375

Five Spice Beef Wok 🍲🍲

CONTAINS: SOY, MOLLUSCS

Marinated beef, carrot, bell pepper, bamboo shoots, squash, green beans, mushrooms, onions and spring onions. Served with rice 298

Ramen 🍲

CONTAINS: EGG, SOY, WHEAT, FISH, SHELLFISH

Pork neck, egg noodles, bean sprouts, spring onions, coriander, kimchi, fresh chili and soy marinated eggs 249

Spicy Miso Ramen 🍲🍲🍲

CONTAINS: WHEAT, SOY, FISH, SULPHITE, EGG

Pork neck, spring onions, egg noodles, coriander, bamboo shoots, nori, fresh chili and soy marinated eggs 249

DESSERTS

Petit 4 Macaron

CONTAINS: EGGS, MILK, SOYA, ALMONDS, HAZELNUTS, PISTACHIOS

Four macarons 89

Mango Sorbet

With fresh fruit salad and coulis 99

Crème Brûlée

CONTAINS: MILK, EGG

With passion fruit coulis and fresh passion fruit 145

Chocolate Fondant

CONTAINS: MILK, SULFITES, WHEAT, EGG

With vanilla ice cream and passionfruit coulis 159

Fried Banana

CONTAINS: MILK, WHEAT

Hit from the 80's! Fried banana with coconut served with vanilla ice cream and citrus caramel sauce flavored with Cointrau 139

SOFT DRINKS & NON ALCOHOLIC



Soft drinks 69 / Large 83

Coca-Cola, Coca-Cola Zero, Fanta Zero, Sprite Zero

San Pellegrino 0,25 62

San Pellegrino 0,75 119

San Pellegrino Limonade 0,20 Lemon 62

Apple juice 66

Ice Tea Mango 66

Red Bull Original or sugarfree 68

Saferiet 0,33 Raspberry or cherry 77

Clausthaler Classic 0,33 79

CONTAINS: BARLEY, WHEAT

Weihenstephaner alkoholfrei 0,5 98

CONTAINS: BARLEY, WHEAT

Heineken 0.0 0,33 79

CONTAINS: BARLEY

Nøgne Ø Himla Humle 0,33 85

CONTAINS: WHEAT, BARLEY

No substitutions please

BEER / CIDER

CB 0,5 139	Nøgne Ø Asian Pale Ale 0,33 125
<small>CONTAINS: BARLEY</small>	<small>CONTAINS: BARLEY, WHEAT</small>
CB Lite 0,5 139	Nøgne Ø IPA 0,33 138
<small>CONTAINS: BARLEY</small>	<small>CONTAINS: BARLEY, WHEAT</small>
Heineken 0,33 119	Nøgne Ø Saison 0,33 138
<small>CONTAINS: BARLEY</small>	<small>CONTAINS: BARLEY, WHEAT</small>
Singha 0,33 119	Ginger Joe 0,33 119
<small>CONTAINS: BARLEY</small>	<small>CONTAINS: SULPHITE</small>
Asahi Super Dry 0,33 119	Bulmers Original 0,5 145
<small>CONTAINS: BARLEY</small>	<small>CONTAINS: SULPHITE</small>
Sol 0,33 119	Bulmers Red Berries 0,5 145
<small>CONTAINS: BARLEY</small>	<small>CONTAINS: SULPHITE</small>
Weihenstephaner Weissbeer 0,5 149	Grevens Pear Cider 0,33 119
<small>CONTAINS: WHEAT</small>	<small>CONTAINS: SULPHITE</small>

SPARKLING CONTAINS SULPHITE

Mionetto Treviso Prosecco Brut <i>Italy, Glass / Bottle</i> 135/600	Castellblanc Organic Cava <i>Spain</i> 550	J. Laurens Le Moulin Blanquette <i>Languedoc-Roussillon, France</i> 729
--	---	--

WHITE WINE CONTAINS SULPHITE

Villa Wolf Riesling <i>Pfalz, Germany</i> <i>Glass / Bottle</i> 135/650	Franc Millet Sancerre <i>Loire, France</i> 730
Brocard Sainte Claire Chablis <i>Chablis, France</i> <i>Glass / Bottle</i> 159/750	Dopff & Irion Cuvée René Dopff Riesling <i>Alsace, France</i> 630
Mud House Sauvignon Blanc <i>Marlborough, New Zealand</i> 650	Dopff & Irion Cuvée René Dopff Gewurztraminer <i>Alsace, France</i> 630
Rabl Grüner Veltliner Löss <i>Niederösterreich, Austria</i> 650	

ROSÉ CONTAINS SULPHITE

Plaimont Colombelle Rose <i>Cotes de Gascoine, France</i> <i>Glass / Bottle</i> 135/650
Mud House Sauvignon Blanc Rosé <i>Marlborough, New Zealand</i> <i>Bottle</i> 655

RED WINE CONTAINS SULPHITE

Villa Wolf Pinot Noir <i>Pfalz, Germany</i> <i>Glass / Bottle</i> 135/650	Marqués de Cáceres Crianza <i>Rioja, Spain</i> 599	Giacosa Fratelli Barbera d'Alba <i>Piemonte, Italy</i> 660
Valpantena Torre del Falasco Ripasso della Valpolicella DOC <i>Veneto, Italia</i> <i>Glass / Bottle</i> 149/715	Mud House Pinot Noir <i>Central Otago, New Zealand</i> 679	Fontanafredda Barolo Serralunga <i>Piemonte, Italy</i> 899
	Colomé Auténtico Malbec <i>Salta, Argentina</i> 720	

LIQUOR CONTAINS SULPHITE

WHISKY

Bulliet Bourbon 119
Nikka Whiskey From The Barrel 139
Old Pulteney 12 YO 149

RUM

Zacapa Centenario 23 135
AH Riise Non Plus Ultra Rum 180

CALVADOS

Le Calvados Christian Drouin 149
--

COGNAC

Cognac de Luze VSOP 139
Cognac de Luze VS 119
Cognac de Luze XO 159
Brillet Grande Champagne 270



 **MonsoonKrs**  **#monsoon.krs**

RÅDHUSGATA 12 • KRISTIANSAND
TELEFON 415 92 500 • E-POST: POST@MON-SOON.NO

